

*Ivy Gardens 2*  
BY SAMANA DEVELOPERS

A SYMPHONY OF LUXURY

**SAMANA**  
DEVELOPERS





# URBAN HAVEN

Welcome home to Ivy Gardens 2 by SAMANA Developers – a luxurious haven. Walk into the world of opulence, reflected perfectly in every detail of this exquisite project. This is where you experience the perfect amalgamation of modern comfort and natural serenity. Discover your new sanctuary in the heart of Dubai.



# ELEGANCE REDEFINED

Behold, the epitome of modern living - Ivy Gardens 2 by SAMANA Developers. A masterpiece of architecture, this stunning project redefines luxury living in the heart of Dubai. Reflecting craftsmanship, each space here is created to be as functional as it is beautiful. Come discover the magic unfold!

SAMANA



A woman with long, wavy blonde hair is seen from the back, wearing a strapless, floor-length green gown with a beaded bodice. She is standing in a field of tall grass, and the dress is blowing in the wind. The background is a soft, hazy sunset or sunrise over a landscape.

# VISION MEETS REALITY

Like a symphony, this architectural marvel orchestrates a harmonious blend of nature and luxury, offering you a serene retreat from the bustling city life. Experience the allure of sumptuousness and discover a new way of living, where comfort and style intertwine to create an exceptional living experience.













# A TAPESTRY OF OPULENCE

Emerge into a realm of exquisite grandeur at Ivy Gardens 2 by SAMANA Developers, where every facet of existence is concealed in lavish sophistication. This architectural marvel is a paean to luxury, meticulously crafted to cater to the most discerning tastes.







# EASY ACCESS, GREAT CONVENIENCE

Situated at DLRC, IVY Gardens 2 by SAMANA Developers offers the perfect location and has everything needed for everyday life nearby, along with easy access to major locations. It is strategically located between the Emirates and Al Ain highways.

## **10 – 15 min**

Global Village  
Dubai Outlet Mall  
MG World  
Fairgreen International School

## **15 – 20 min**

Mirdif City Centre  
Dubai Airport  
Dubai Mall  
Miracle Garden

## **15 – 20 min**

Dubai Downtown  
Burj Al Khalifa



## SEAMLESS ACCESSIBILITY

With easy access to major highways and public transportation, DLRC offers residents seamless connectivity to the rest of the city. Whether you're commuting to work or exploring the city's many attractions, living in DLRC puts everything within easy reach.







SAMANA



A woman with long, dark, wavy hair is seen from behind, looking out over a city skyline at night. The city lights are blurred into bokeh, with warm orange and yellow lights in the foreground and cooler blue and purple lights in the background. The sky is a mix of blue and purple hues. The overall mood is serene and contemplative.

# REFLECTING OPIULENCE

A symphony of contemporary design and timeless elegance, standing as a beacon of prestige in the bustling heart of Dubai. Each detail, a stroke of genius, weaving together to create a masterpiece simply awe-inspiring. It's time to luxuriate in the splendour!







# LIVE THE SERENE MOMENTS

Immerse yourself in a world of romance and equanimity at Ivy Gardens 2 by SAMANA Developers. Here, amidst stunning views and gentle breezes, you'll find the perfect setting for moments of togetherness and intimacy. Our balconies are more than just outdoor spaces; they're extensions of your living space, offering you a private retreat where you can relax, unwind, and reconnect with your loved one.











**VIBE**  
DRUM & BASS

DJ MARKY - ELEITO MELHOR DJ INTERNACIONAL  
SOC. XTREME AWARDS

**1Xtra** a



# DIVE INTO INDULGENCE

Indulge in the ultimate relaxation experience at Ivy Gardens 2 by SAMANA Developers, where luxury meets tranquillity. Whether you're lounging by the poolside, sipping on a refreshing drink, or taking a leisurely swim, every moment here is a testament to the art of living well. Come explore a lifestyle that is as indulgent as it is rejuvenating.



SAMANA





# BLENDING TECHNOLOGY WITH LUXURY

Live a life that is as smart as it is sophisticated with our smart homes. Experience the convenience of controlling your home with just a touch or a voice command. From adjusting the lighting to setting the perfect temperature, our smart homes put you in control, allowing you to create the perfect ambience for every moment.













# COMFORT OASIS

Experience the joy of family-centric living at Ivy Gardens 2 by SAMANA Developers, where every moment is an opportunity to create cherished memories. Here, you'll find a home that is not just luxurious but also warm, welcoming, and filled with love. Our spacious and elegantly designed living rooms are crafted with your family's comfort and happiness in mind.















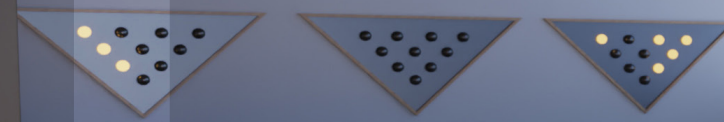
# TIMELESS MOMENTS

Create unforgettable memories with your loved ones in the serene ambience of Iuy Gardens 2 by SAMANA Developers. Immerse yourself in the crystal-clear waters of our luxurious pool, surrounded by lush greenery and exquisite architecture. Experience pure joy and relaxation as you bond with family and friends in this idyllic setting, making every moment truly special.



# BOWLING

Game	1	2	3	4	5	6	7	8	9	10	Total
Player 1	10	10	10	10	10	10	10	10	10	10	110
Player 2	5	7	9	8	6	4	3	2	1	0	45
Player 3	8	6	7	5	9	10	10	10	10	10	90
Player 4	3	4	5	6	7	8	9	10	10	10	77
Player 5	2	3	4	5	6	7	8	9	10	10	68
Player 6	1	2	3	4	5	6	7	8	9	10	58
Player 7	0	1	2	3	4	5	6	7	8	9	48
Player 8	0	0	1	2	3	4	5	6	7	8	38
Player 9	0	0	0	1	2	3	4	5	6	7	28
Player 10	0	0	0	0	1	2	3	4	5	6	18
Team 1	10	10	10	10	10	10	10	10	10	10	110
Team 2	5	7	9	8	6	4	3	2	1	0	45









A couple is jogging away from the camera on a paved path. The scene is bathed in the warm, golden light of a low sun, creating long shadows on the path. The path is flanked by lush greenery, including palm trees and flowering plants. In the background, modern buildings are visible through the trees.

# REVEL IN THE JOYS OF LIFE

Your journey to wellness and indulgence commences at Ivy Gardens 2 by SAMANA Developers. Every moment is an ode to the art of living. Dive into a lifestyle that transcends the ordinary, offering you a sanctuary of serenity amidst the bustling city life. Savour the beauty of each day!













# A SEAMLESS EXPERIENCE

Experience the epitome of convenience with our valet parking service at Ivy Gardens 2 by SAMANA Developers. Our valet parking service is more than just a convenience; it's a luxury experience that adds an extra touch of elegance to your lifestyle. Whether you're arriving home after a long day or heading out for a night on the town, our valet service makes parking effortless and stress-free.

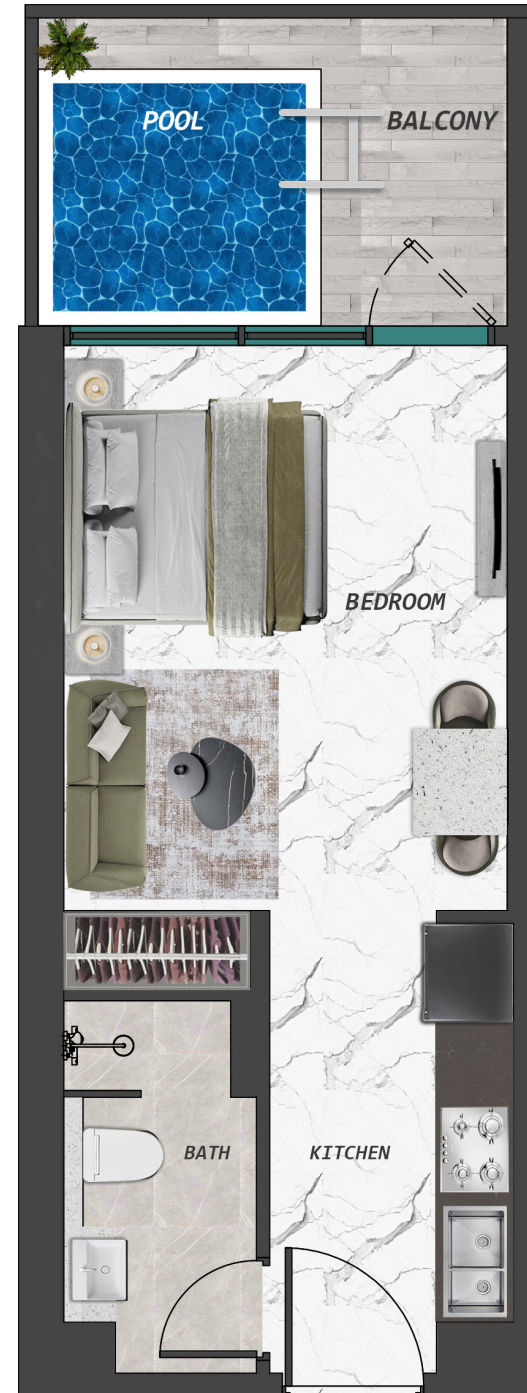


An architectural rendering of a modern, multi-story building with a curved facade and large glass windows. The building is surrounded by lush tropical landscaping, including several tall palm trees and dense foliage. In the foreground, a swimming pool is visible with a person sitting on the edge. The overall scene is presented in a dark, teal-tinted style.

# UNITS LAYOUT



# STUDIO WITH POOL



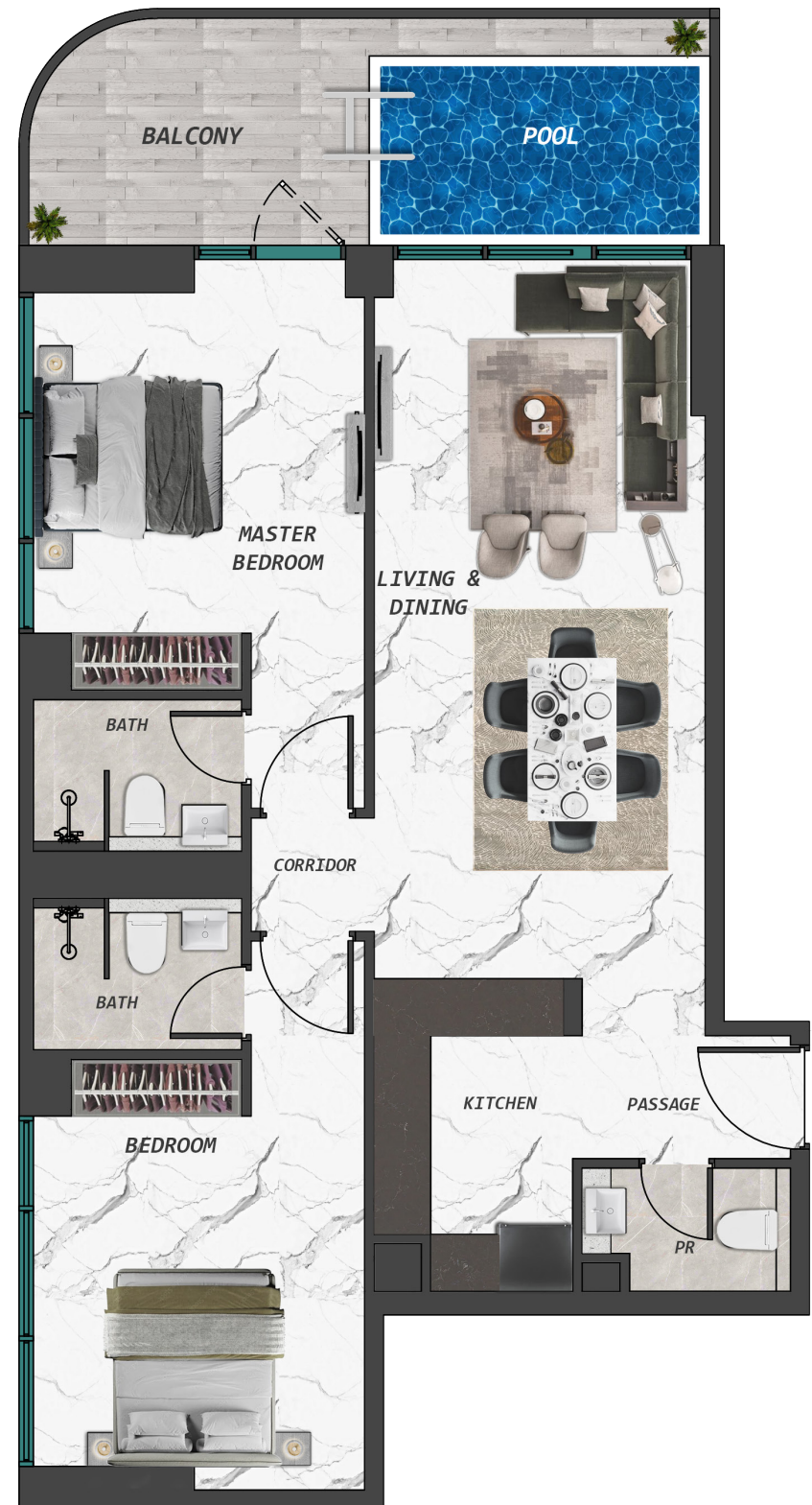


# 1 BEDROOM WITH POOL





# 2 BEDROOM WITH POOL



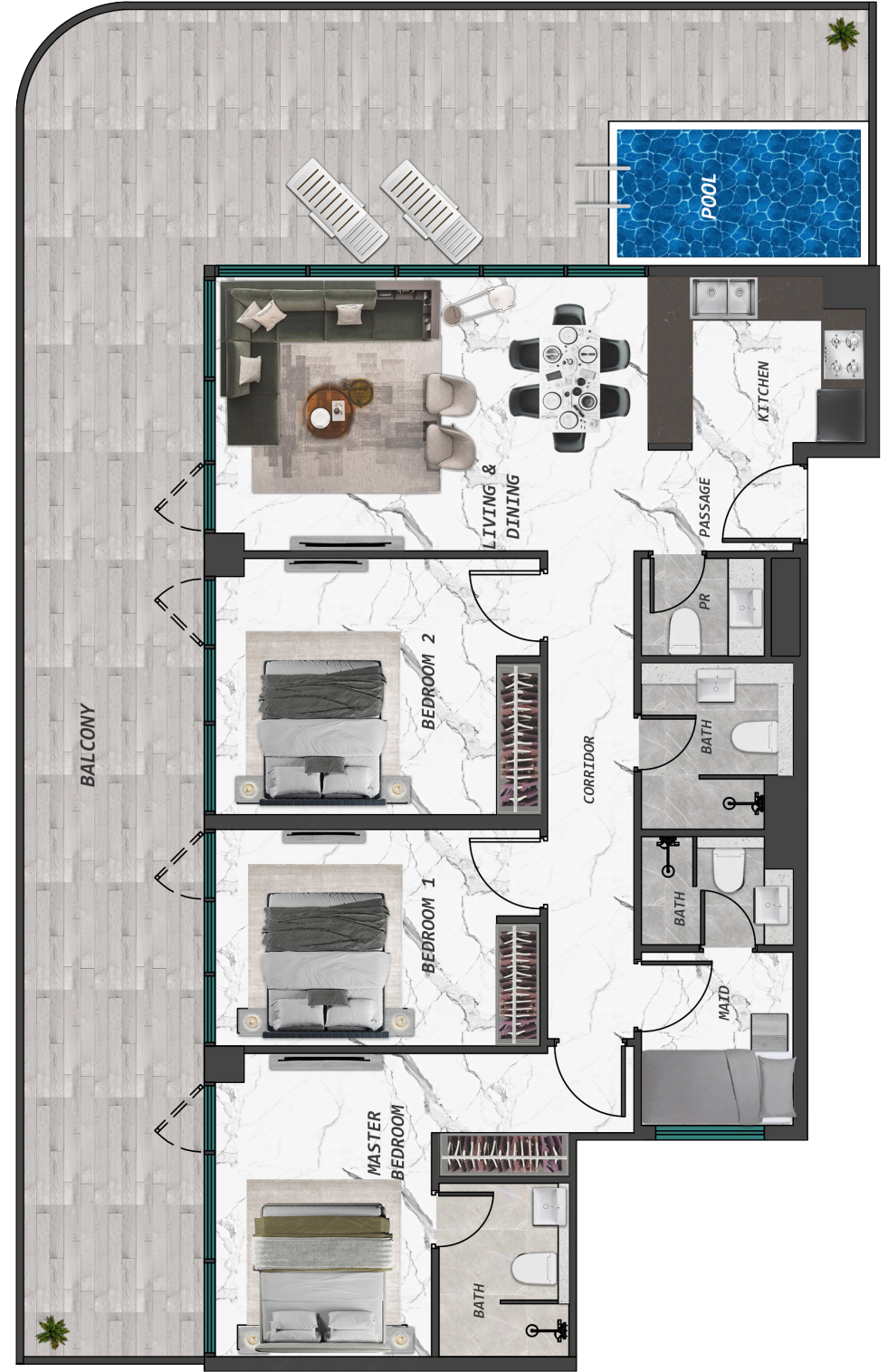


# 2 BEDROOM WITH POOL + MAID ROOM





# 3 BEDROOM WITH POOL + MAID ROOM





A modern, minimalist interior space featuring a lounge area with a large sofa and a dining area with a round table and chairs. The room has large windows on the right side, providing a view of the outdoors. The lighting is soft and ambient, with recessed ceiling lights and a large, abstract sculpture hanging from the ceiling. The overall aesthetic is clean and contemporary.

# SAMANA

DEVELOPERS

+971 4 563 9510  
info@samanadevelopers.com  
www.samanadevelopers.com

4th Floor, Building 7,  
Bay Square, Business Bay,  
Dubai, United Arab Emirates