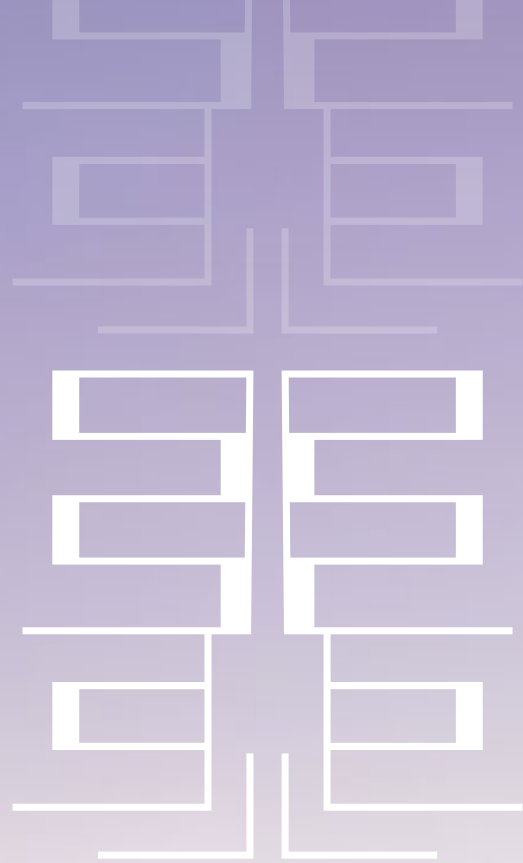




OCEAN CREST

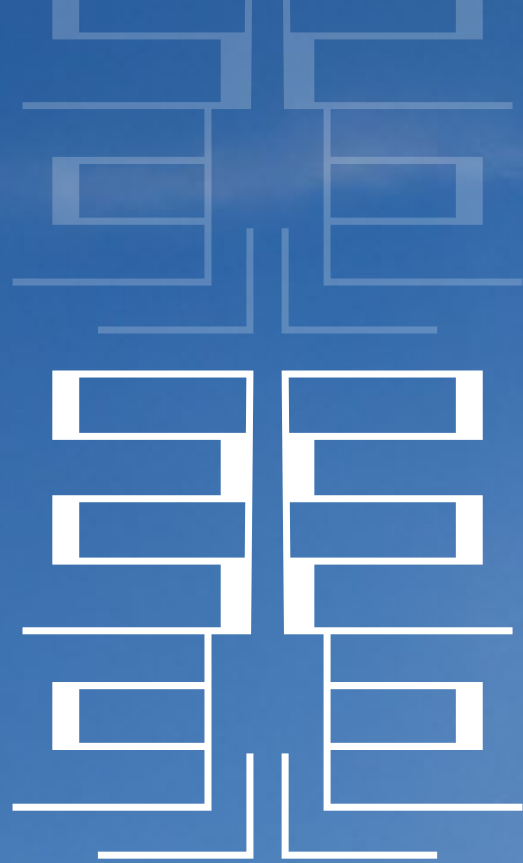
By SD



WHERE THE OCEAN INSPIRES, AND ELEGANCE LIVES

SAMANA Ocean Crest welcomes you to a sanctuary where sea breeze soothes the spirit and immaculate design elevates the soul. Tucked within the iconic Dubai Islands, this exclusive retreat brings the rhythm of the ocean to your doorstep. From curated interiors to panoramic views, every space whispers refinement—and every day feels like an escape.



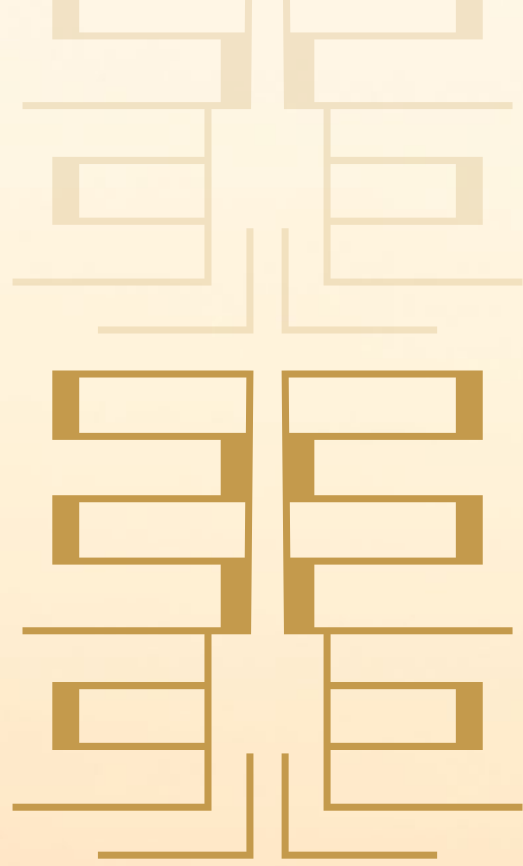


FORM THAT FOLLOWS TRANQUILITY

Inspired by the gentle movement of the sea and sculpted with intention, SAMANA Ocean Crest presents a bold yet graceful architectural identity.

Clean lines, layered textures, and organic curves come together in a composition that reflects its coastal surroundings. With only 56 residences, Ocean Crest offers a rare sense of privacy in an emerging island destination, where contemporary design rises in harmony with the horizon.





A LIFESTYLE OF SUBTLE INDULGENCE

Luxury is expressed in the quietest of ways—through soft textures, intelligent layouts, and finishes chosen not just for their elegance, but for how they make you feel. This is not just a home, but an experience crafted for those who appreciate grace in the details and calm in the everyday.

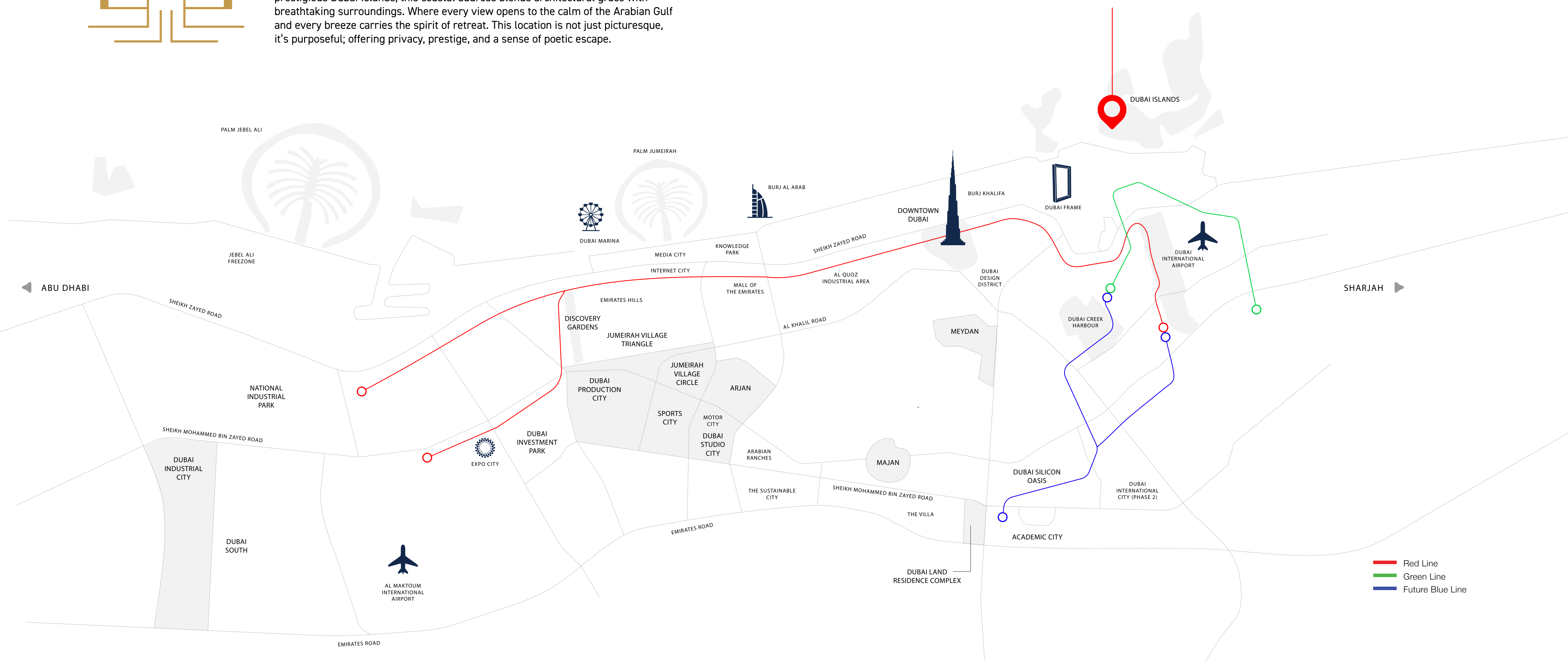




WHERE LAND EMBRACES THE SEA

SAMANA Ocean Crest is a serene expression of island living. Tucked within the prestigious Dubai Islands, this coastal address blends architectural grace with breathtaking surroundings. Where every view opens to the calm of the Arabian Gulf and every breeze carries the spirit of retreat. This location is not just picturesque, it's purposeful; offering privacy, prestige, and a sense of poetic escape.

OCEAN CREST *By SD*





SEAMLESSLY CONNECTED

While SAMANA Ocean Crest feels like a tranquil island retreat, it remains effortlessly connected to Dubai's most iconic destinations. Located on the exclusive Dubai Islands, this residence offers easy access to Downtown Dubai, Palm Jumeirah, Dubai International Airport, and more.

You're always minutes away from the best this city has to offer, yet perfectly cocooned in your seaside escape.



15 MIN

- Deira City Centre
- Dubai Gold Souk
- Dubai Creek

20 MIN

- Dubai Airport
- Palm Jumeirah
- Burj Al Arab
- JBR The Walk

25 MIN

- Downtown Dubai
- Burj Khalifa
- Dubai Mall
- Dubai Marina



ELEGANCE AT FIRST GLANCE

The moment you step inside, you are greeted by a space that sets the tone for everything to follow. The entrance lobby is grand yet graceful, framed by clean lines, warm textures, and ambient lighting.

Sculptural details and curated materials create an atmosphere of calm prestige, offering a sophisticated welcome to residents and guests alike.

WHERE COMFORT MEETS CLASS

Crafted for connection and calm, the living area offers a harmonious blend of style and simplicity. From soft textures to neutral palettes, every detail is selected to make the everyday feel extraordinary.

Whether hosting guests or enjoying quiet moments alone, this space becomes the backdrop to your most meaningful memories.





YOUR MOST PRIVATE SANCTUARY

In every bedroom, serenity takes center stage. Spacious layouts, neutral tones, and panoramic windows create a soothing environment where morning light gently greets you and evening silence welcomes rest.

This is your personal haven crafted for clarity, comfort, and deep exhale moments. It's not just a room; it's a retreat designed to help you reconnect with yourself.

WHERE RITUAL BECOMES RETREAT

Each bathroom is an expression of quiet luxury. Featuring natural stone finishes, frameless glass, ambient lighting, and elegant fixtures, they create a spa-like experience that soothes and elevates every moment spent here.

Each element is thoughtfully chosen to support relaxation, refinement, and the small rituals that define your day.





A LIFESTYLE SHAPED BY WELLNESS AND WONDER

At SAMANA Ocean Crest, amenities are more than just conveniences. They are a reflection of your lifestyle. Every space is designed to promote balance, connection, and beauty, offering moments of movement and stillness, energy and ease. This is where your everyday life meets exceptional design.





A POOL THAT REFLECTS THE SKY

Surrounded by sea breeze and open air, the pool area is a destination in itself.

Featuring a leisure water lounge, children's splash pad, sun deck, and shaded seating, it's a place where families, friends, and neighbors gather to relax, refresh, and take in the view. Every dip feels like a moment of luxury.

WHERE ENERGY FINDS ITS FLOW

The state-of-the-art gym is built for focus, flow, and freedom. With both indoor and open-air training zones, it supports all forms of movement.

Bathed in natural light and equipped with premium machines, it's a wellness space that empowers strength, clarity, and routine.

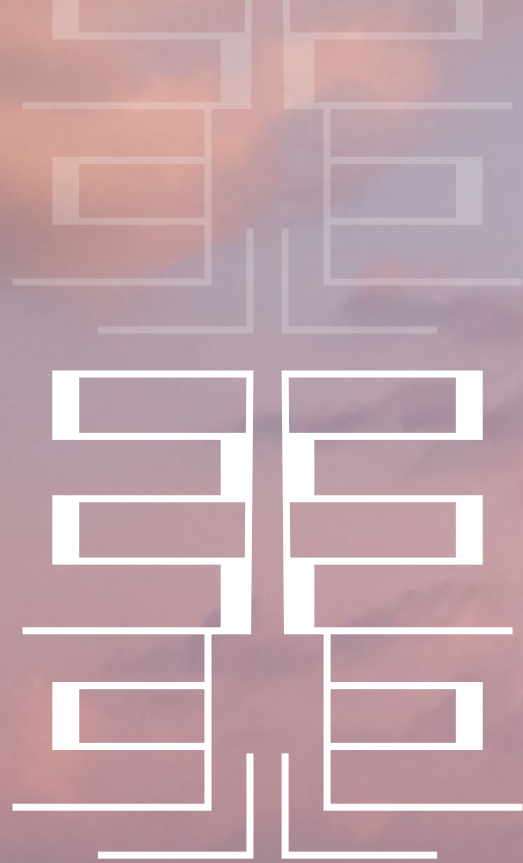




A SANCTUARY FOR THE SENSES

Step into a world of warmth, stillness, and renewal. The spa experience at SAMANA Ocean Crest includes steam rooms, saunas, and serene spaces that allow you to slow down and reconnect.

Whether it's a moment of quiet after a long day or a part of your weekly rhythm, this is a sanctuary that invites you to restore your balance—mentally, physically, and emotionally.



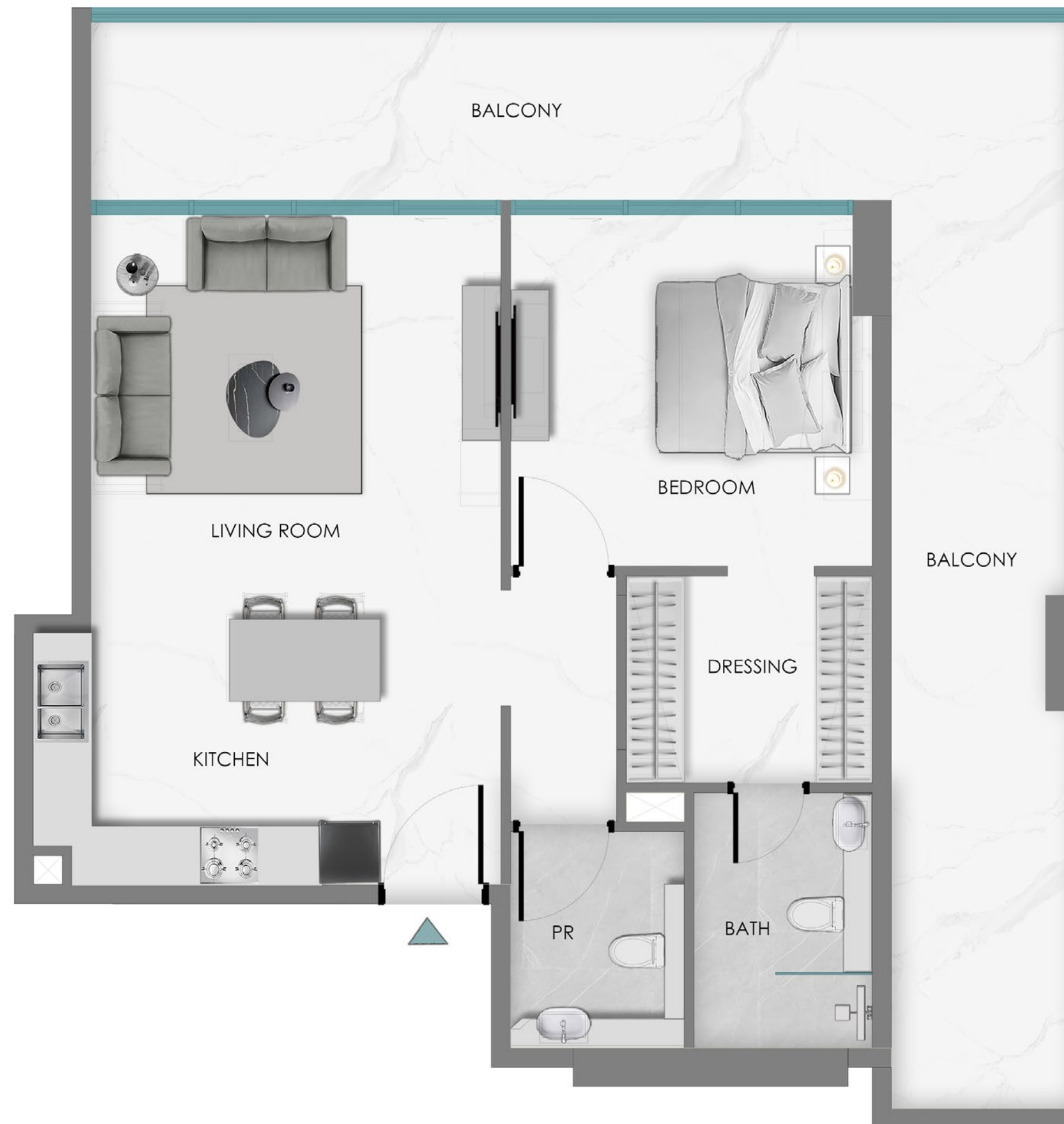
UNIT LAYOUTS



1 BEDROOM

WITHOUT POOL

TYPE - 1



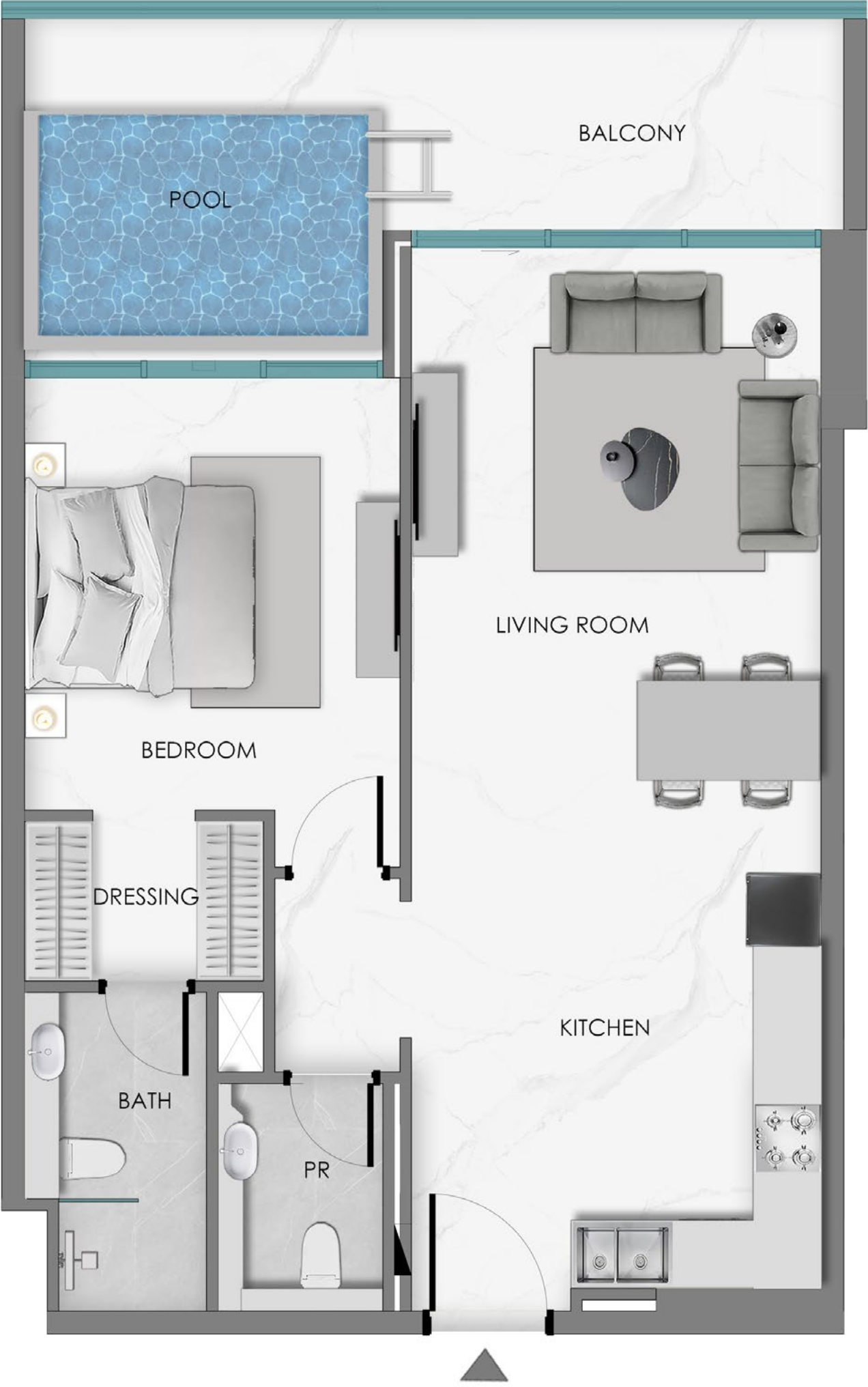


1 BEDROOM
WITH POOL
TYPE - 2





1 BEDROOM
WITH POOL
TYPE - 3





2 BEDROOM

WITH STORE + POOL

TYPE - 1





2 BEDROOM

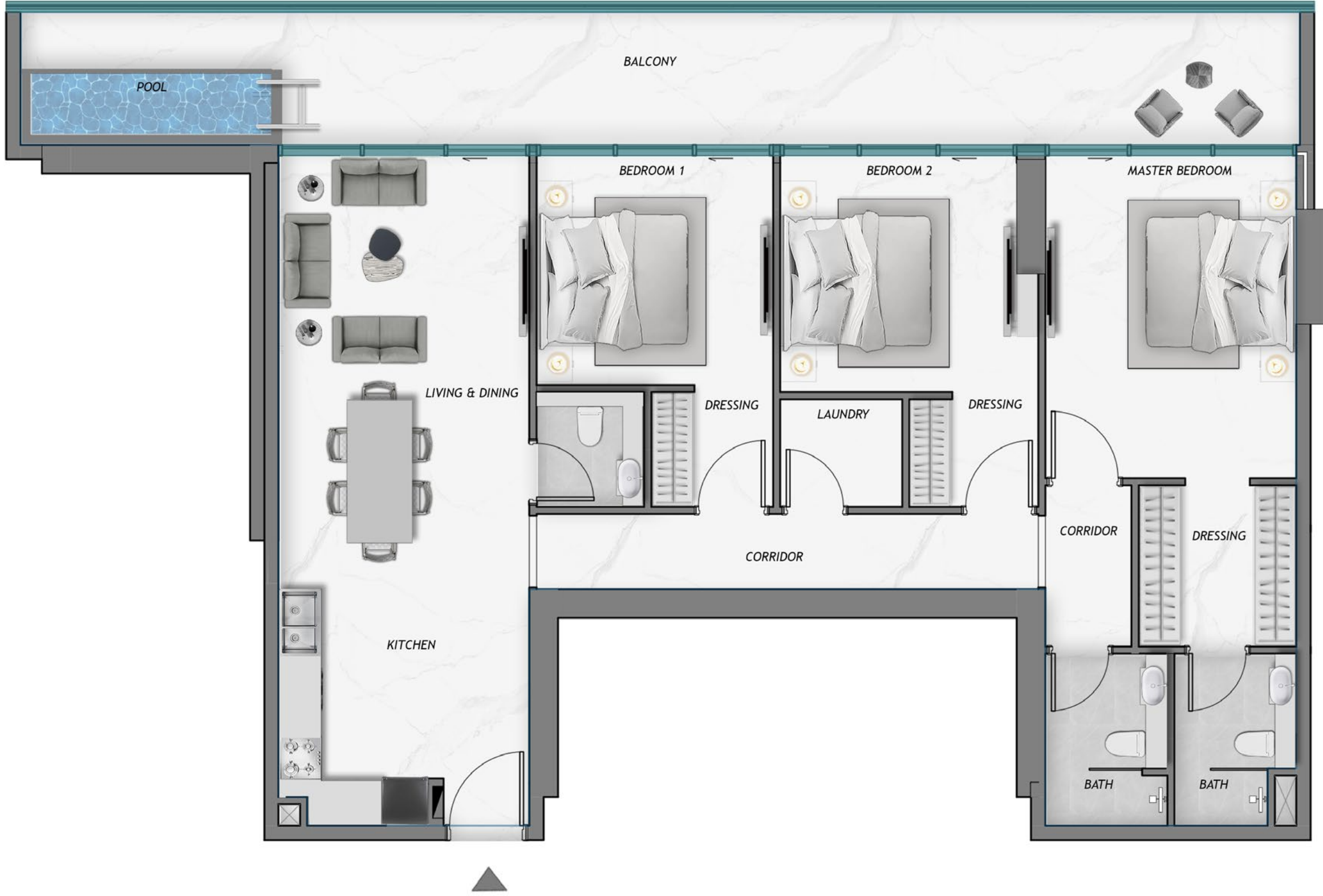
WITH STORE + POOL

TYPE - 2





3 BEDROOM
WITH LAUNDRY + POOL
TYPE - 1

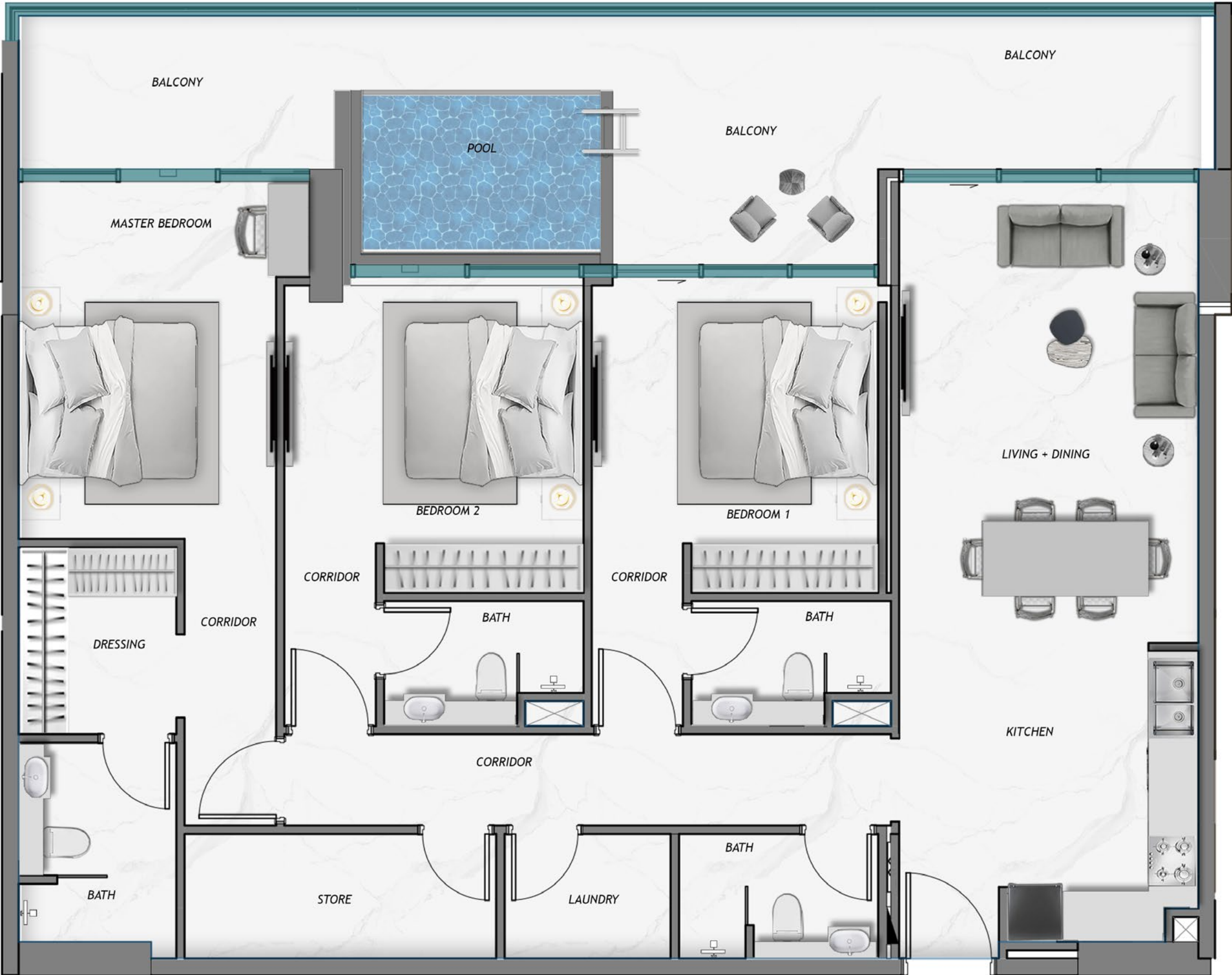




3 BEDROOM

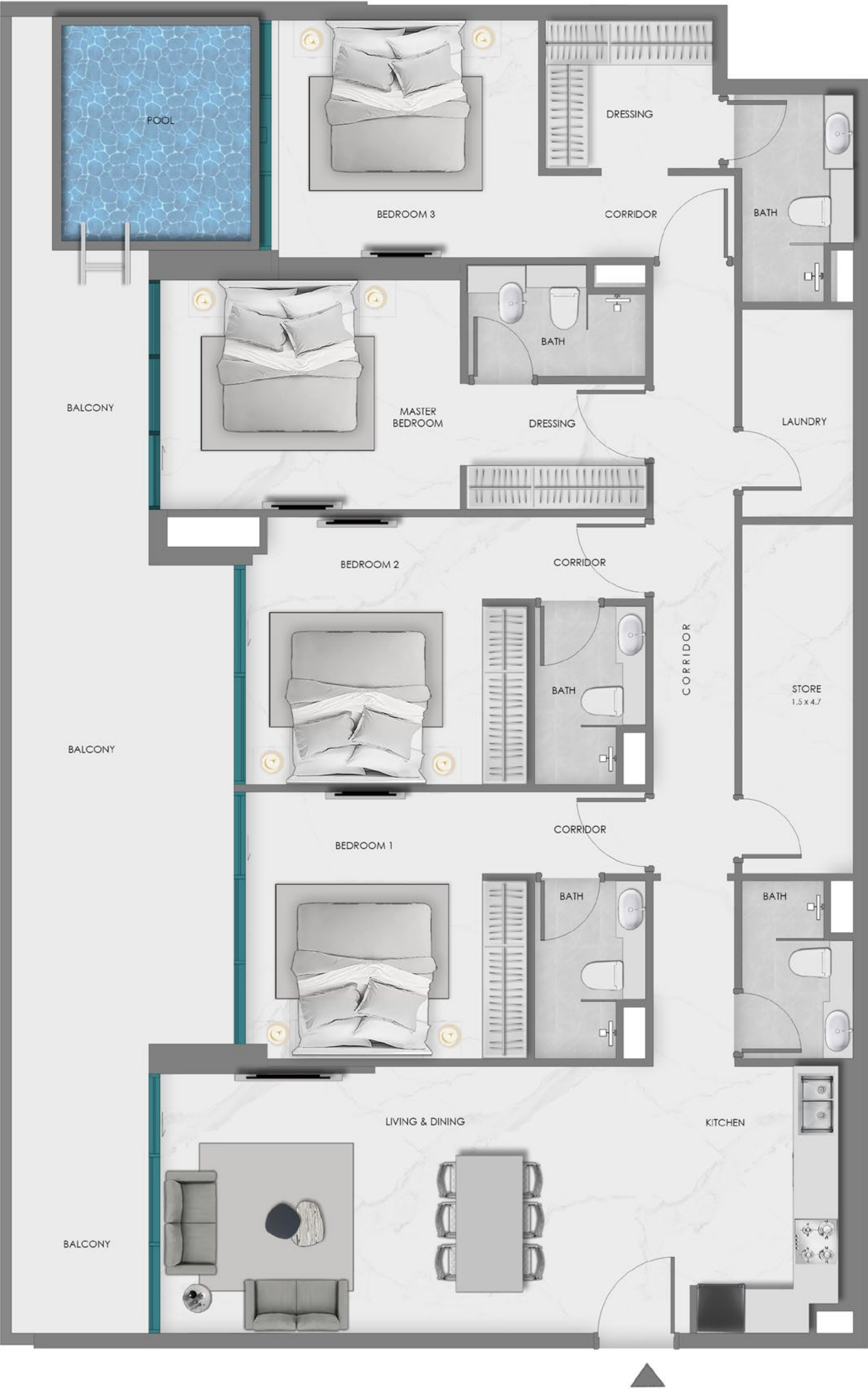
WITH STORE / LAUNDRY + POOL

TYPE - 2





4 BEDROOM
WITH STORE / LAUNDRY + POOL
TYPE - 2





4 BEDROOM

WITH MAID + POOL

TYPE - 1



SAMANA

DEVELOPERS

800-SAMANA

info@samanadevelopers.com

www.samanadevelopers.com

UAE Sales Offices

Business Bay | Dubai Marina | Abu Dhabi